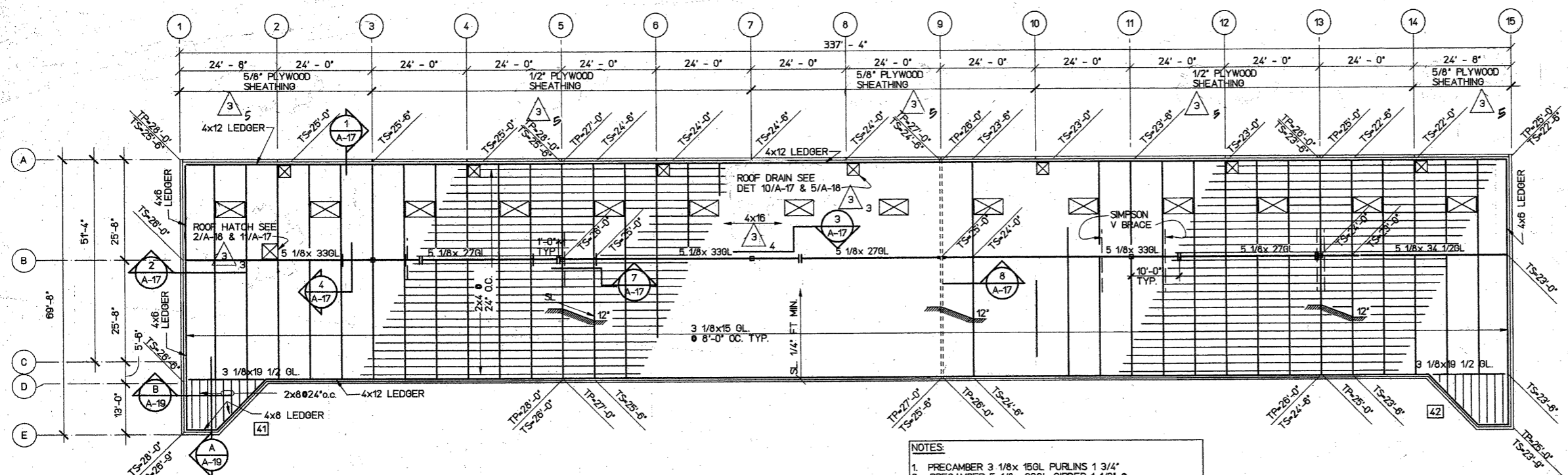


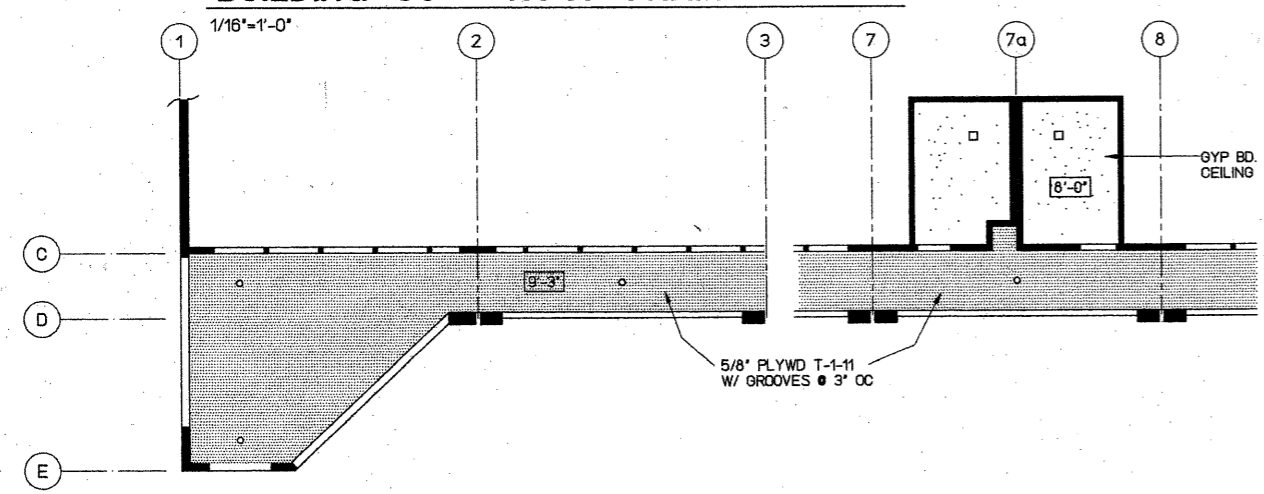
THIS WORK WAS PREPARED BY ME OR UNDER MY SUPERVISION AND CONSTRUCTION OF THIS PROJECT WILL BE UNDER MY SUPERVISION OF CONSTRUCTION AS DEFINED UNDER SECTION 15-42.2 OF CHAPTER 15, RULES OF THE BOARD OF PROFESSIONAL ENGINEERS, ARCHITECTS AND LAND SURVEYS, STATE OF HAWAII.

**RICHARD M. SATO & ASSOCIATES, INC.**  
CONSULTING ENGINEERS CIVIL & STRUCTURAL  
HONOLULU, OAHU, HAWAII WALKUKU, MAUI, HAWAII

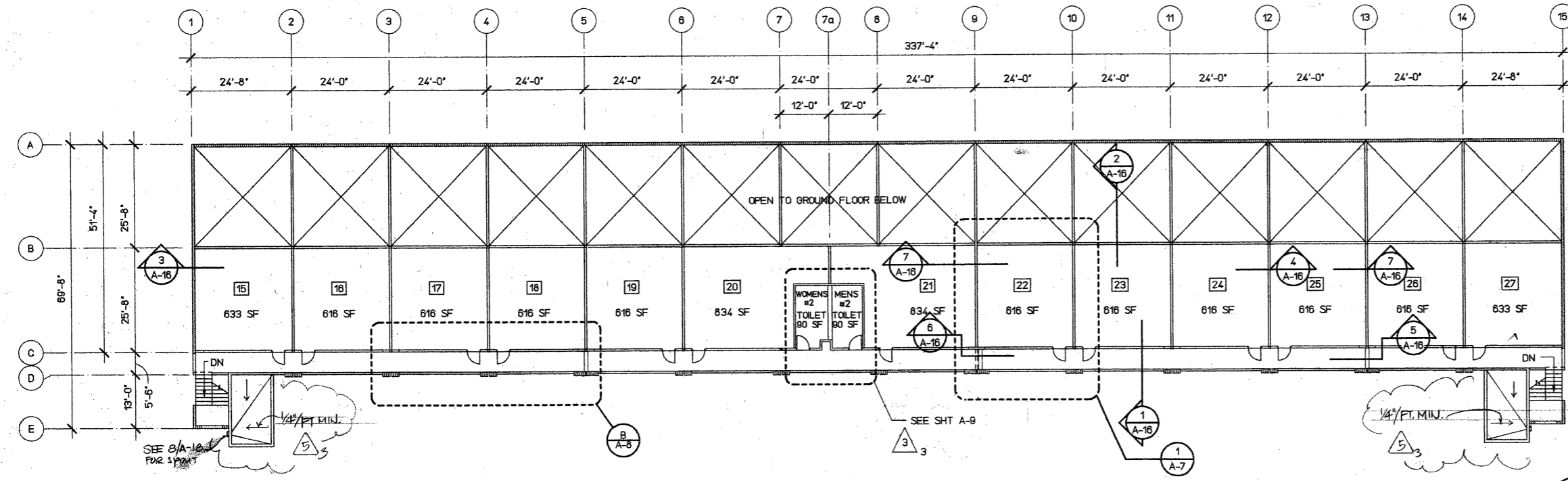


- NOTES:**
- 1. PRECAMBER 3 1/8x 15GL FURLINS 1 3/4"
  - 2. PRECAMBER 5 1/8x 33GL GIRDER 1 1/2" #
  - 3. MIDSPAN DO NOT PRECAMBER CANTILEVER TIP.
  - 4. PRECAMBER 5 1/8x 34 1/2GL GIRDER 2"
  - 5. PRECAMBER 5 1/8x 27GL GIRDER 2"
  - 6. TOP OF ROOF SHEATHING & TOP OF PANEL DIMENSIONS ARE REFERENCED TO LOWEST FINISH FLOOR ELEVATION OF EACH BUILDING.
  - 7. SEE FLOOR PLANS FOR FLOOR ELEVATIONS.

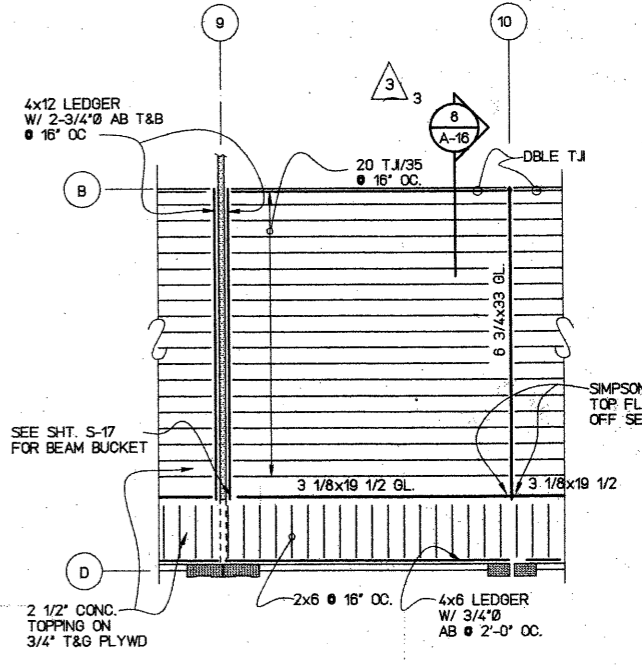
**BUILDING C3 - ROOF FRAMING PLAN**



**SECOND FLOOR REFLECTED CEILING PLAN AT CORRIDOR**  
SCALE: 1/8"=1'-0"



**BUILDING C3 - SECOND FLOOR PLAN**  
1/16"=1'-0"



**TYPICAL SECOND FLOOR FRAMING**  
1/8"=1'-0"

**Kihei Commercial Center**  
PHASE 1 C  
Kihei, Maui, Hawaii TMK: 3-9-01por. of 33

DATE	10-25-89
SYNOPSIS	RESUBMITTAL & CHANGED PLYWOOD SHEATHING
DESCRIPTION	12-11-89
CONSTRUCTION	
DESIGN BY:	
DRAWN BY:	
CHECKED BY:	
DATE:	July 24, 1989
JOB NO.:	8772
SHEET	

Plot on 31-Oct-89 13:40:49  
\\users\project\kihei\c-7