

**PIPE COLUMN SCHEDULE**

MARK	SIZE	REMARKS
C-1	5" φ PIPE COLUMN	
C-2	6" φ PIPE COLUMN	
C-3	3-1/2" φ PIPE COLUMN	
C-4	W6x25 COL.	SEE 8/A-16

**FOOTING SCHEDULE**

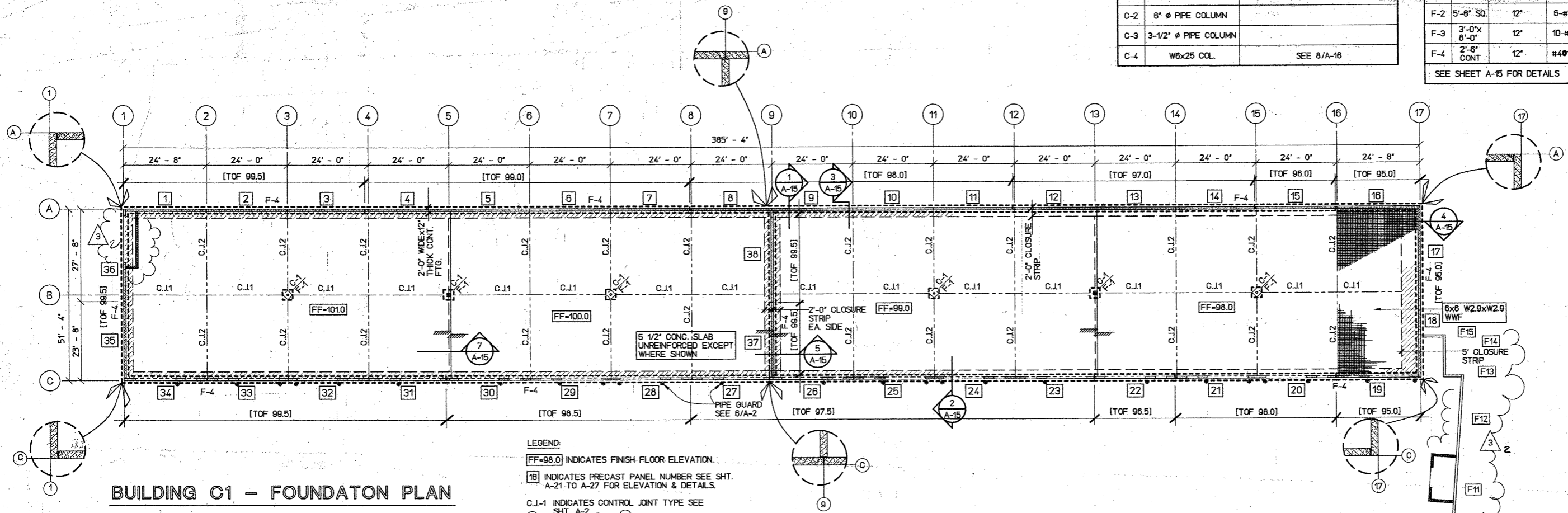
MARK	SIZE		REINFORCING BARS			REMARKS
	WxL	THICK "T"	"A"	"B"	"C"	
F-1	4'-0" SQ.	12"	4-#4	4-#4		
F-2	5'-6" SQ.	12"	6-#5	6-#5	8-#4	8/A-15
F-3	3'-0" X 8'-0"	12"	10-#4	5-#4	8-#4	8/A-15
F-4	2'-6" CONT.	12"	#4@18	3-#4	#4@ JOINT	1 TO 6/A-15

SEE SHEET A-15 FOR DETAILS

**RICHARD M. SATO**  
REGISTERED PROFESSIONAL ENGINEER  
No. 2298-S  
HAWAII, U.S.A.

THIS WORK WAS PREPARED BY ME OR UNDER MY SUPERVISION AND CONSTRUCTION OF THIS PROJECT WILL BE UNDER MY SUPERVISION OF CONSTRUCTION AS DEFINED UNDER SECTION 15-42-2 OF CHAPTER 82, RULES OF THE BOARD OF PROFESSIONAL ENGINEERS, ARCHITECTS AND LAND SURVEYORS, STATE OF HAWAII.

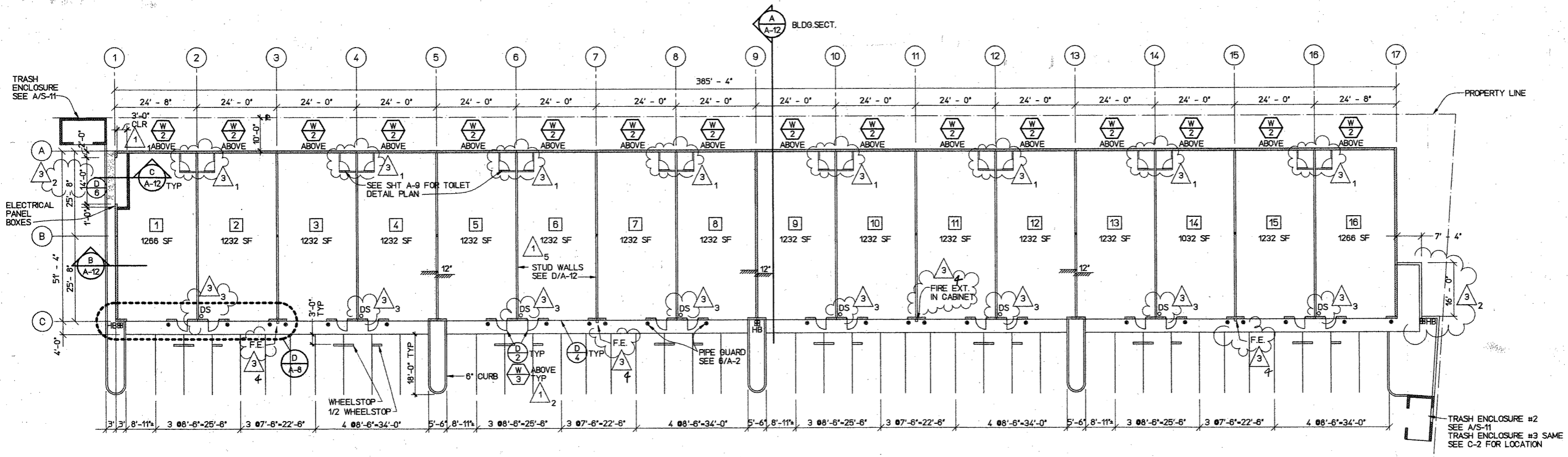
**RICHARD M. SATO & ASSOCIATES, INC.**  
CONSULTING ENGINEERS CIVIL & STRUCTURAL  
HONOLULU, OAHU, HAWAII WAILUKU, MAUI, HAWAII



**BUILDING C1 - FOUNDATION PLAN**

1/16"=1'-0"

- LEGEND:**
- FF-98.0 INDICATES FINISH FLOOR ELEVATION.
  - 18 INDICATES PRECAST PANEL NUMBER SEE SH. A-21 TO A-27 FOR ELEVATION & DETAILS.
  - C.J.-1 INDICATES CONTROL JOINT TYPE SEE SH. A-2
  - F14 INDICATES PRECAST FENCE SEE SH. A-11 FOR ELEV. & DETAIL.
  - [TOF 97.5] INDICATES TOP OF FOOTING ELEV.



**BUILDING C1 - FLOOR PLAN**

1/16"=1'-0"

- NOTE:**
- W 2 INDICATES WINDOW TYPE, SEE SHEET A-20.
  - D 2 INDICATES DOOR TYPE, SEE SHEET A-20.
  - F.E. INDICATES FIRE EXTINGUISHER, 10# DRY CHEMICAL TYPE 4A608,C

1. ALL HOSE BIBBS TO BE BOXED WITH KEYPED COVER PLATE.

**Kihei Commercial Center**

**PHASE 1 C**  
Kihel, Maui, Hawaii TMK: 3-9-01por. of 33

**BUILDING C-1 GROUND FLOOR AND FOUNDATION PLAN**

REVISIONS DESCRIPTION DATE  
 1 ELEC. SERVICE AREA & DR. & WINDOW MARKS 8-15-89  
 2 CLARIFICATIONS AND BLDG DEPT COMMENTS 10-25-89

DESIGN BY: \_\_\_\_\_  
 DRAWN BY: \_\_\_\_\_  
 CHECKED BY: \_\_\_\_\_  
 DATE: July 24, 1989  
 JOB NO: 8772

SHEET **A-3**  
 OF 17 SHEETS 64

Plot on 31-Oct-89 10:55:03  
 \Users\project\khai/a-3